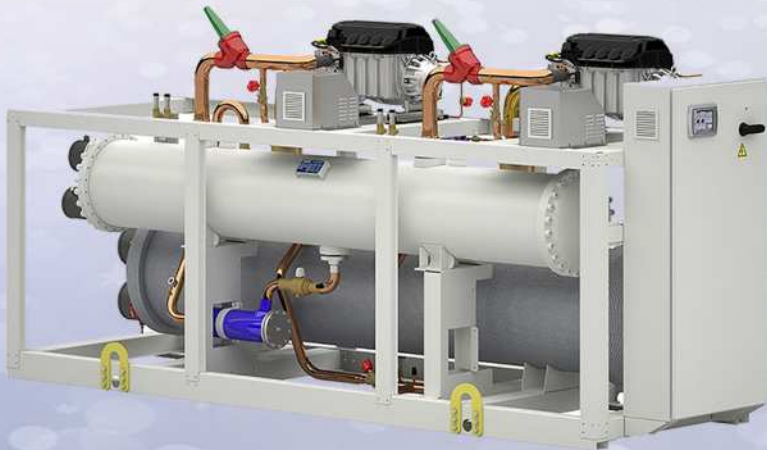


HVAC / Process Chiller



- Lower GWP - MODBUS compatibility - Reputable component brand
- Environment friendly - Aluminium microchannel coils (on some models)
- Microprocessor adjustment, with keyboard and LCD display (on some models)
- Refrigerant R1234ze (some models)



Chiller with Centrifugal compressor and Flooded evaporator



- Modularity
- High Efficiency
- Compact size
- Standby Safety
- Easy Maintenance
- Low cost installation
- Refrigerant R1234ze (some models)



Package Chiller

- Cooling capacity 0.89kW to 60kW
- Lower GWP
- Coaxial tube-in-tube evaporator
- Reputable component brand
- Environment friendly
- Compact size

Crane Cabin Air-conditioning (Turkey)

- Cooling Medium R227ea and R236fa
- Semi-Hermatic Compressor
- Able to maintain temperature at (+)22 to (+)35degC of crane operators cab and electric panel cabinet
- Able to operate up to (+)90degC ambient temperature
- Able to sustain high temperature, excess dust and vibration



WALKER FILTRATION

Compressed Air Filter

- Flow volumes up to 1500 scfm.
- Optimised modular housing design
- Anti re-entrainment
- Unique endcap design



Compressed Air Refrigerated Dryer

- Volumes up to 100,000 m³/h.
- Engineering services for specific needs.
- Less maintenance
- Reliable components



Industrial Chiller and Refrigerant System

- Built to order basis.
- High quality machines, with all SS piping
- High quality components.
- Use NATURAL REFRIGERANTS (such as AMMONIA and CO2).



FISCHER
KALTEKLIMA



Minimum Energy Performance Standards "MEPS" Condensing Unit

- Inverter Drive Compressor
- Single Evaporator
- Plug and Play
- Commissioning By Computer
- Possible Remote Monitoring



Chiller with Built-In Heat Recovery

- Modularity
- High Efficiency
- Plug and Play
- Stackable
- Easy Maintenance
- Low cost installation

Heat Pump (Austria)

- Temperature as high as 130 degC
- Energy efficiency
- MODBUS compatibility
- High COP
- Remote access



Well-known Spare Parts

- OEM
- Reliable
- Easily available
- Affordable



WALKER FILTRATION

Desiccant Compressed Air Refrigerated Dryer

- Volumes 4 to 365 scfm.
- Intelligent Processor:
- Removal desiccant cartridge.
- Less maintenance
- Simple purge plug

